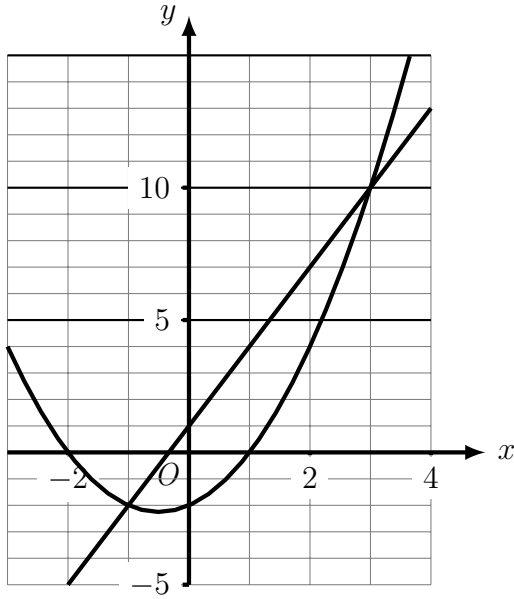
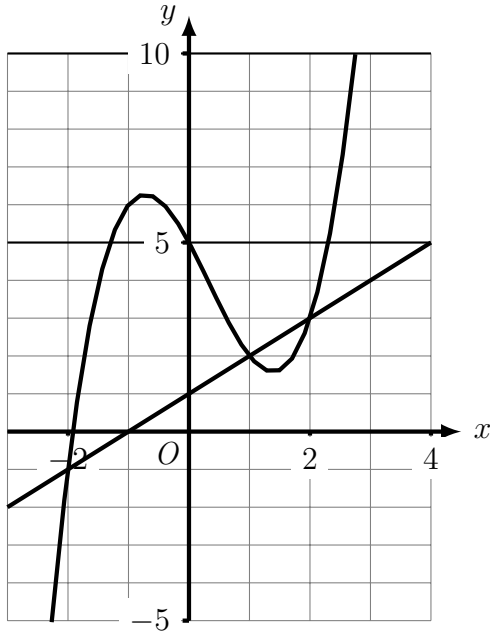


1. Use the graphs to solve the simultaneous equations  $y = 3x + 1$  and  $y = x^2 + x - 2$



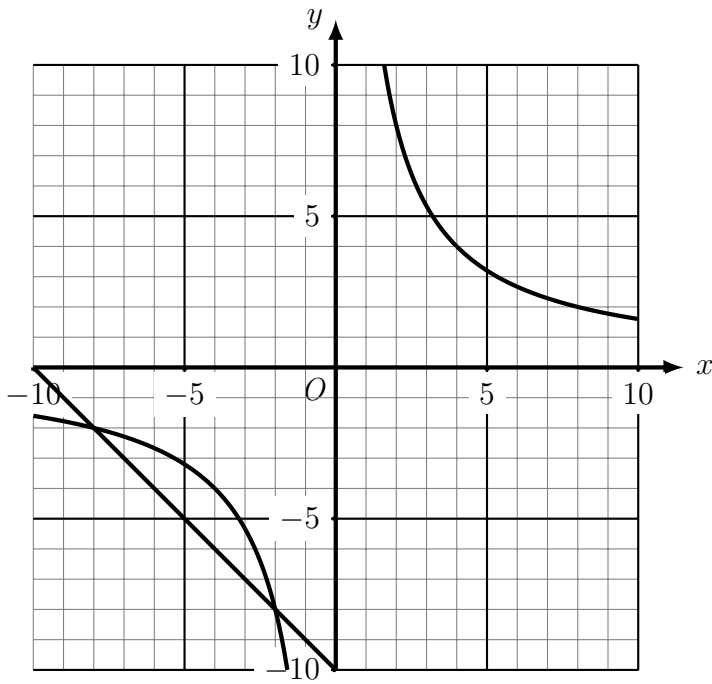
.....

2. Use the graphs to solve the simultaneous equations  $y = x + 1$  and  $y = x^3 - x^2 - 3x + 5$



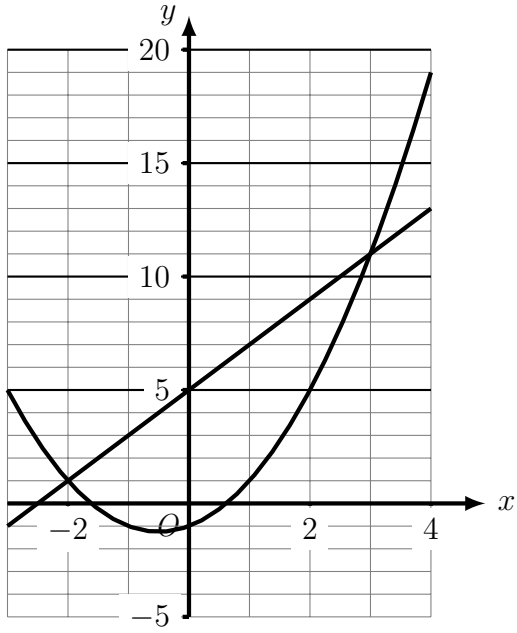
.....

3. Use the graphs to solve the simultaneous equations  $y = -10 - x$  and  $y = \frac{16}{x}$



.....

4. Use the graphs to solve the simultaneous equations  $y = 2x + 5$  and  $y = x^2 + x - 1$



.....

## Answers

1.  $x = -1$  ( $y = -2$ ) and  $x = 3$  ( $y = 10$ ), no need to give  $y$  values
2.  $x = -2$  ( $y = -1$ ),  $x = 1$  ( $y = 2$ ) and  $x = 2$  ( $y = 3$ ), no need to give  $y$  values
3.  $x = -8$  ( $y = -2$ ) and  $x = -2$  ( $y = -8$ ) , no need to give  $y$  values
4.  $x = -2$  ( $y = 1$ ) and  $x = 3$  ( $y = 11$ ), no need to give  $y$  values