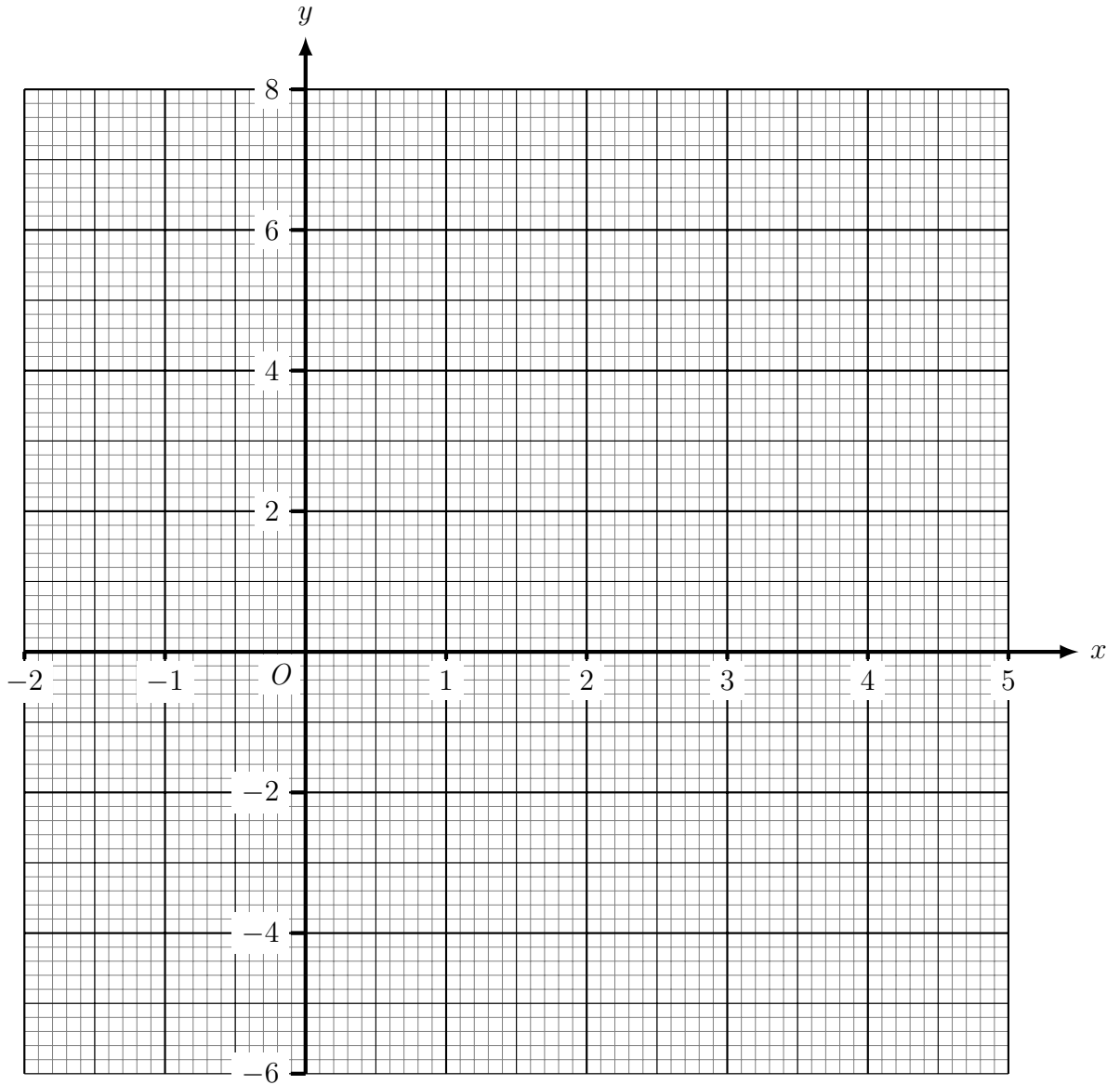


1. (a) Complete the table of values for  $y = x^2 - 3x - 2$

$x$	-2	-1	0	1	2	3	4	5
$y$		2				-2		

(b) On the grid below draw the graph of  $y = x^2 - 3x - 2$  for values of  $x$  from -2 to 5



Answers 1a)

$x$	-2	-1	0	1	2	3	4	5
$y$	8	2	-2	-4	-4	-2	2	8

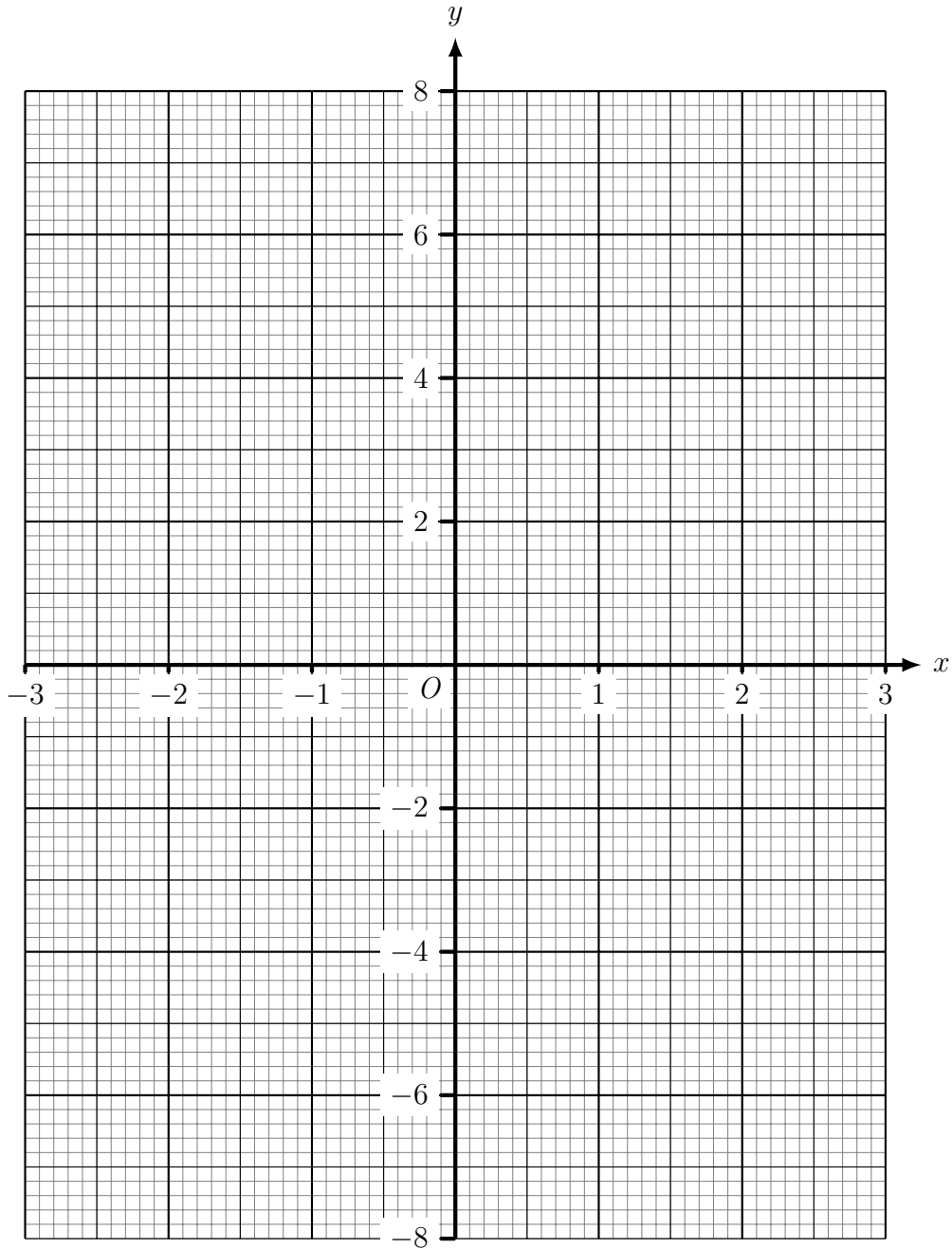
3a)

$x$	0.8	1	1.6	2	2.5	4	5	8	10
$y$	10	8	5	4	3.2	2	1.6	1	0.8

2. (a) Complete the table of values for  $y = x^2 + x - 6$

$x$	-3	-2	-1	0	1	2	3
$y$				-6			6

(b) On the grid below draw the graph of  $y = x^2 + x - 6$  for values of  $x$  from -3 to 3



Answers 2a)

$x$	-3	-2	-1	0	1	2	3
$y$	0	-4	-6	-6	-4	0	6

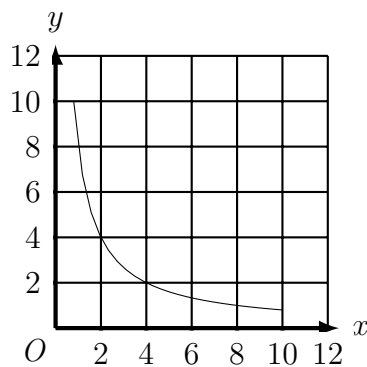
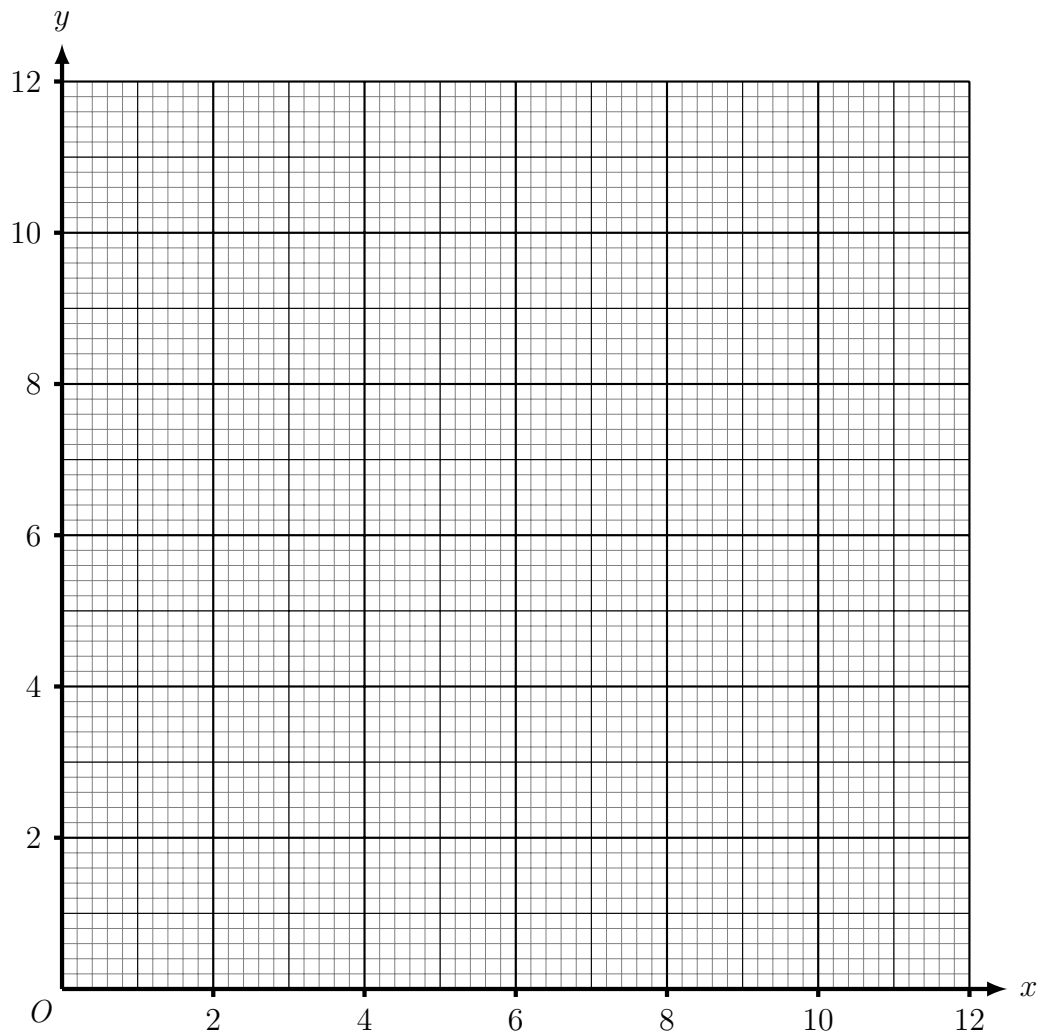
4a)

$x$	0.4	0.8	1	1.5	2	3	6
$y$	15	7.5	6	4	3	2	1

3. (a) Complete the table of values for  $y = \frac{8}{x}$

$x$	0.8	1	1.6	2	2.5	4	5	8	10
$y$		8		4			1.6		0.8

- (b) On the grid below draw the graph of  $y = \frac{8}{x}$  for values of  $x$  from 0.8 to 10

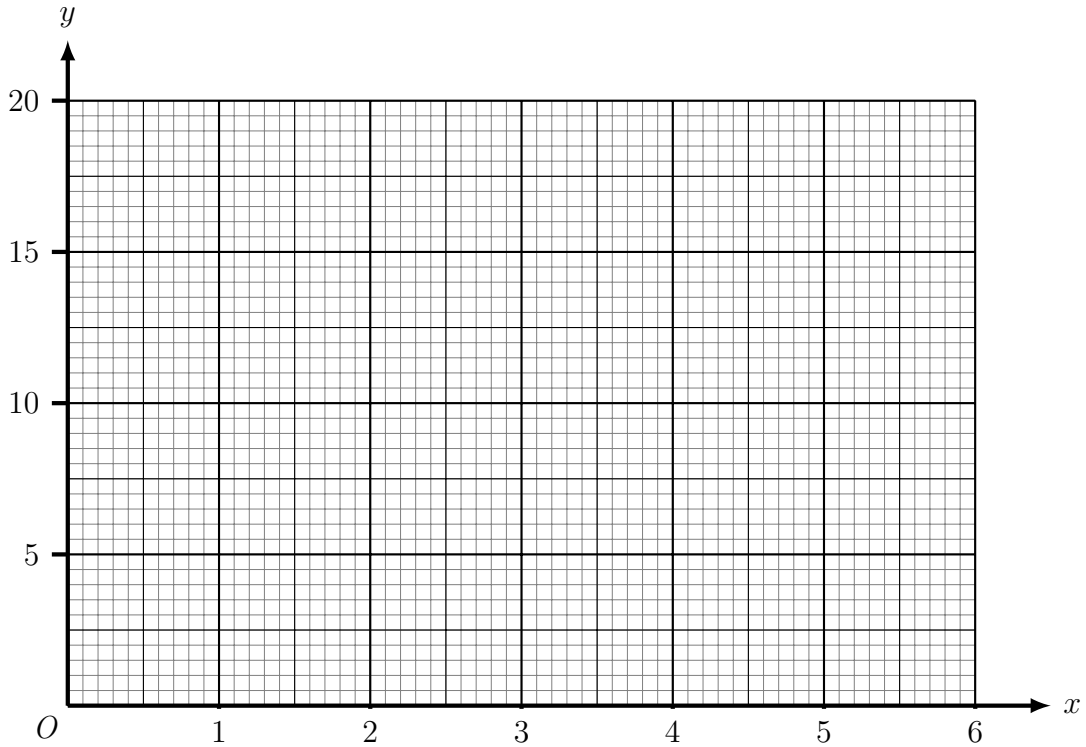


Answers 3b)

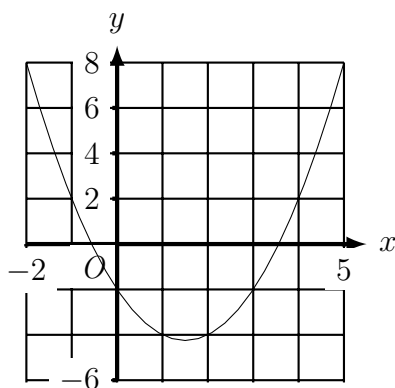
4. (a) Complete the table of values for  $y = \frac{6}{x}$

$x$	0.4	0.8	1	1.5	2	3	6
$y$		7.5			3		1

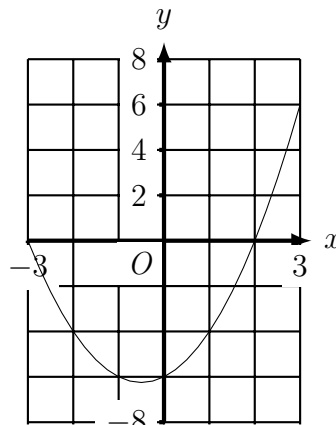
(b) On the grid below draw the graph of  $y = \frac{6}{x}$  for values of  $x$  from 0.2 to 6



Answers 1b)



2b)



4b)

