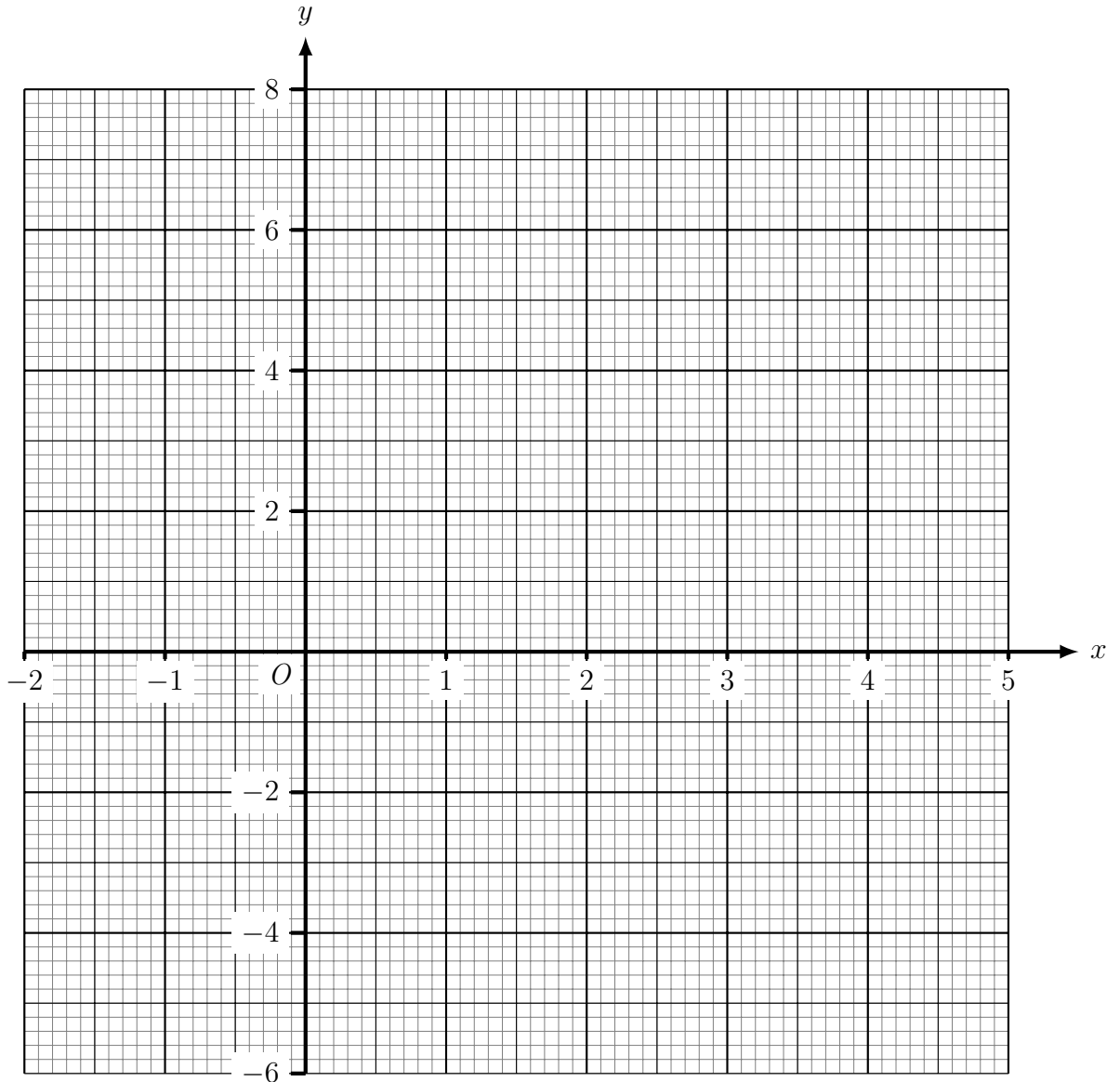


1. (a) Complete the table of values for $y = x^2 - 3x - 2$

x	-2	-1	0	1	2	3	4	5
y		2				-2		

(b) On the grid below draw the graph of $y = x^2 - 3x - 2$ for values of x from -2 to 5



Answers 1a)

x	-2	-1	0	1	2	3	4	5
y	8	2	-2	-4	-4	-2	2	8

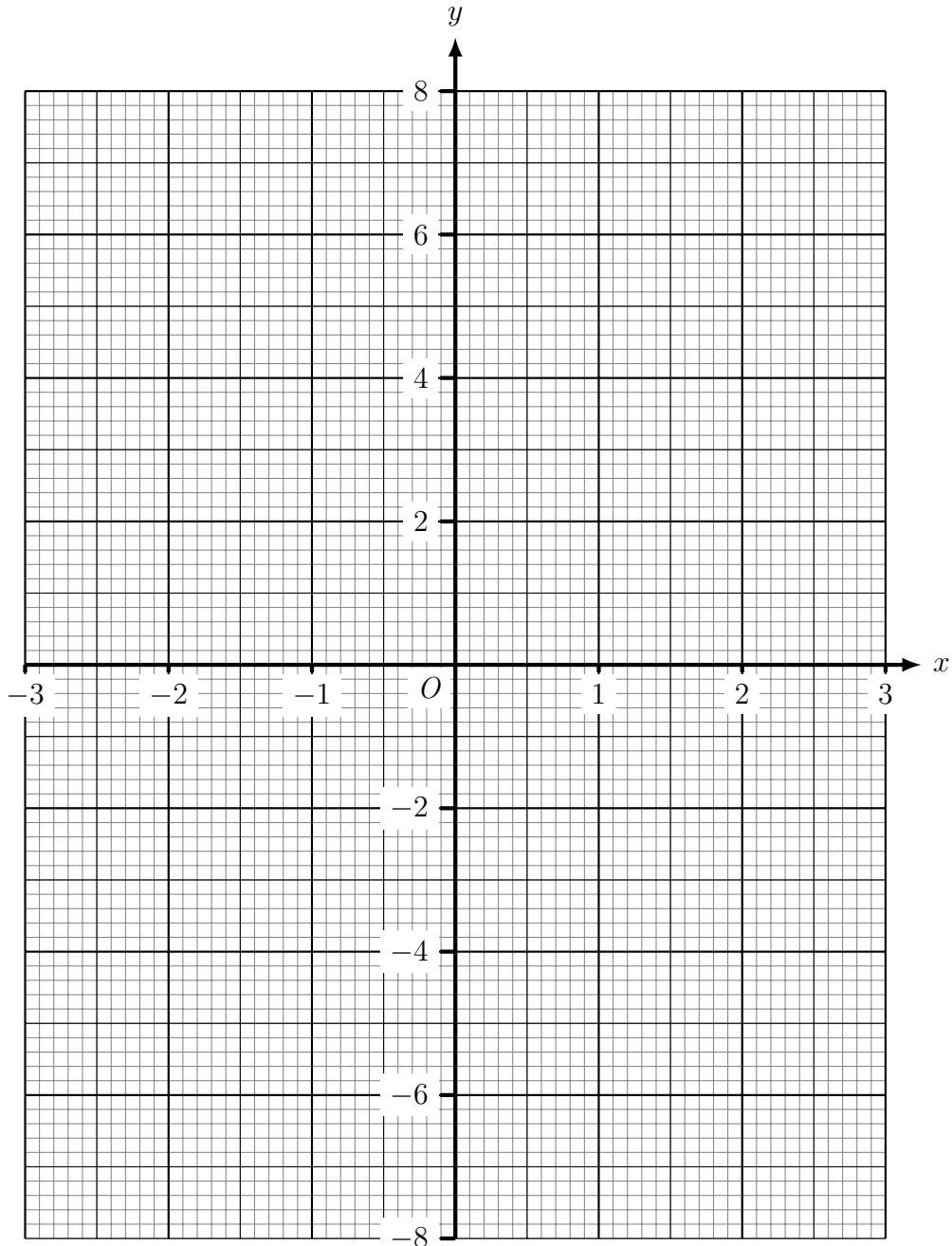
3a)

x	0.8	1	1.6	2	2.5	4	5	8	10
y	10	8	5	4	3.2	2	1.6	1	0.8

2. (a) Complete the table of values for $y = x^2 + x - 6$

x	-3	-2	-1	0	1	2	3
y				-6			6

(b) On the grid below draw the graph of $y = x^2 + x - 6$ for values of x from -3 to 3



Answers 2a)

x	-3	-2	-1	0	1	2	3
y	0	-4	-6	-6	-4	0	6

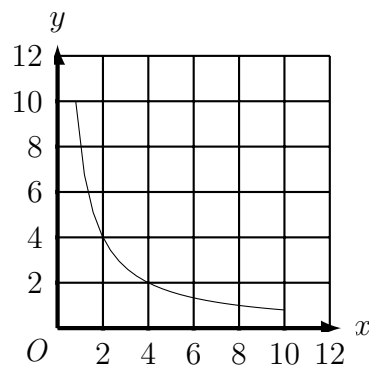
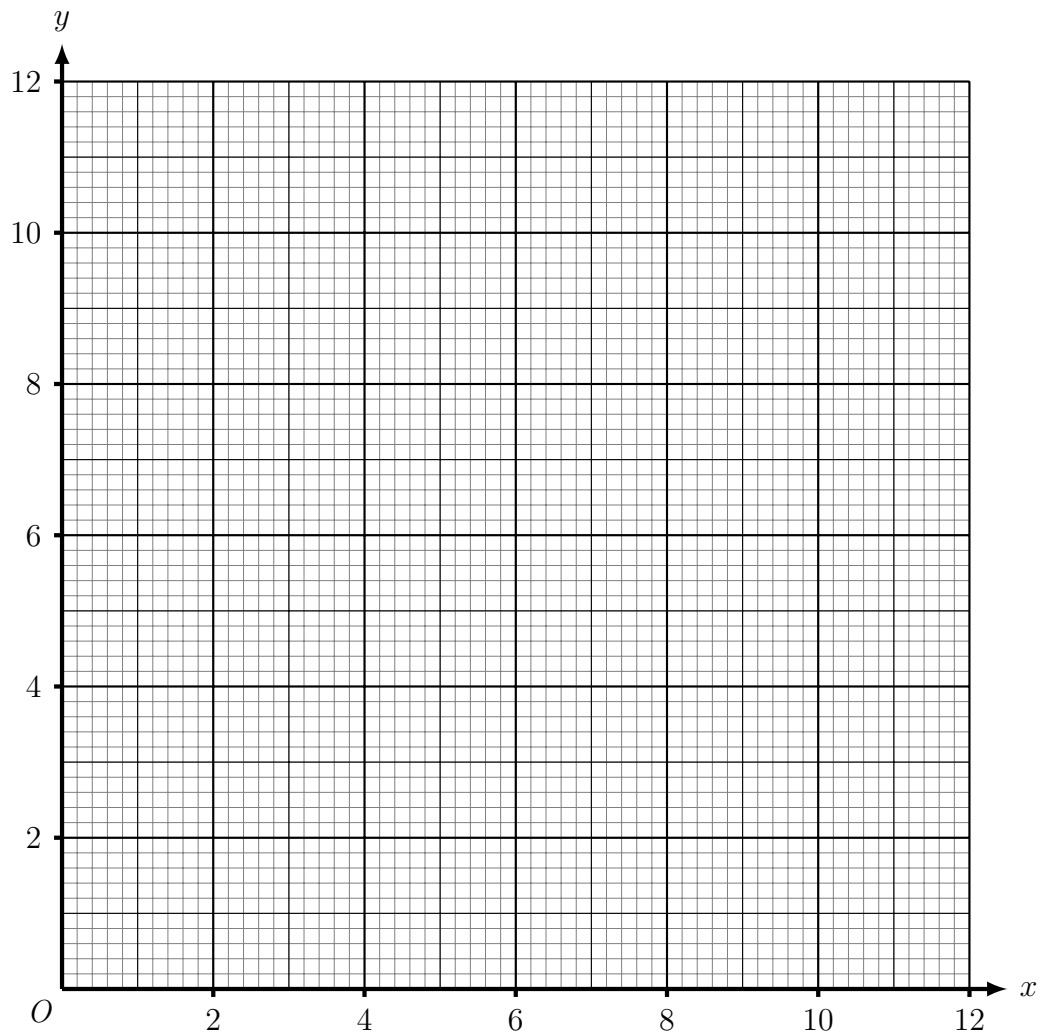
4a)

x	0.4	0.8	1	1.5	2	3	6
y	15	7.5	6	4	3	2	1

3. (a) Complete the table of values for $y = \frac{8}{x}$

x	0.8	1	1.6	2	2.5	4	5	8	10
y		8		4			1.6		0.8

(b) On the grid below draw the graph of $y = \frac{8}{x}$ for values of x from 0.8 to 10

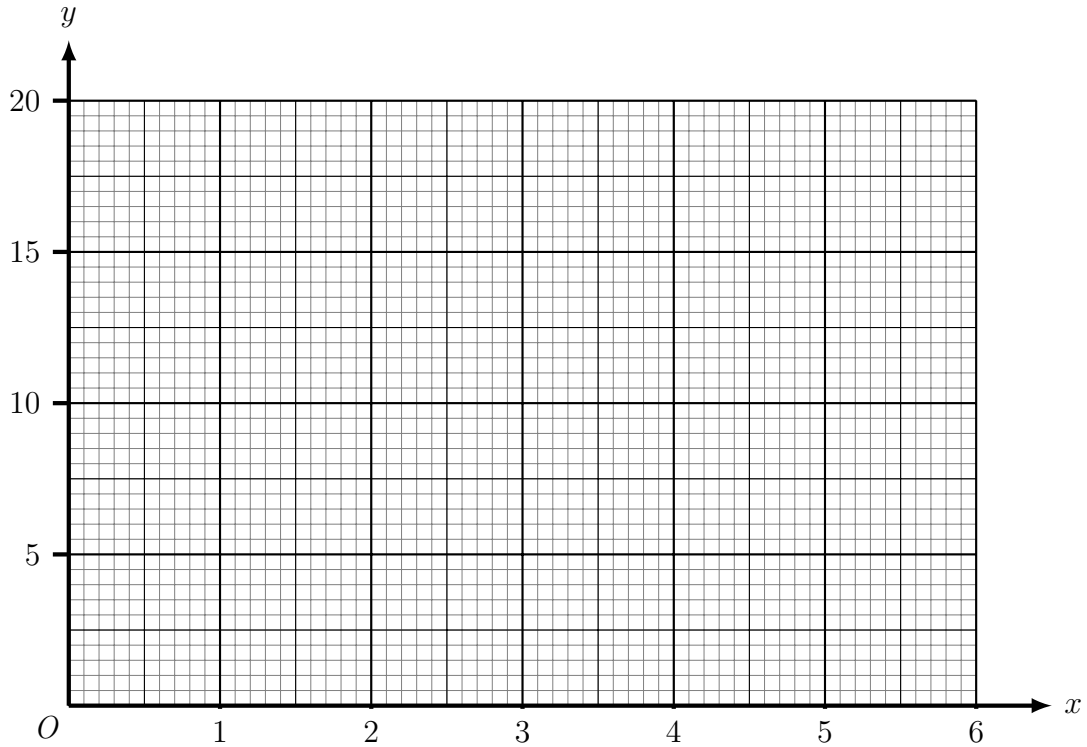


Answers 3b)

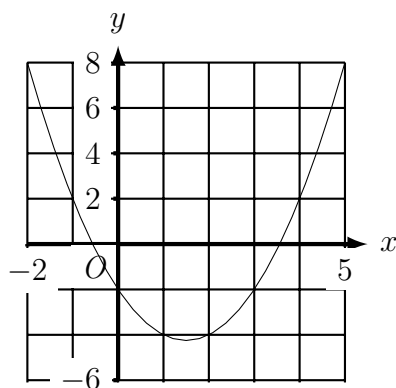
4. (a) Complete the table of values for $y = \frac{6}{x}$

x	0.4	0.8	1	1.5	2	3	6
y		7.5			3		1

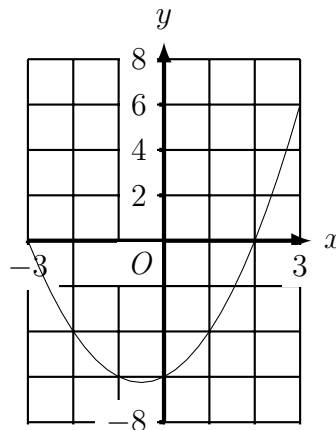
(b) On the grid below draw the graph of $y = \frac{6}{x}$ for values of x from 0.2 to 6



Answers 1b)



2b)



4b)

