

1. You may use these rows of the times table grid to make these equivalent fractions correct.

(i) Complete the \downarrow **OR** the \rightarrow scale factor.

$$\times \dots \left(\frac{4}{7} = \frac{24}{\boxed{}} \right)$$

$\times \dots$
 $\swarrow \quad \searrow$

×	2	3	4	5	6	7	8	9	10
4	8	12	16	20	24	28	32	36	40
⋮	⋮	⋮	⋮	⋮	⋮	⋮	⋮	⋮	⋮
7	14	21	28	35	42	49	56	63	70

(ii) Use your chosen scale factor to write the missing value in the box.

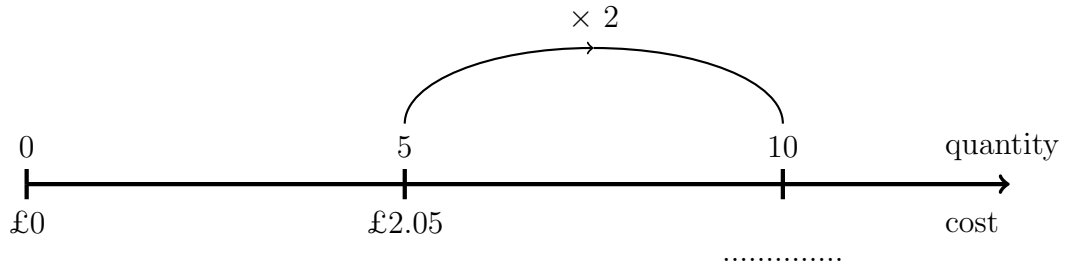
2. Cara wants to buy 10 apples.

Fruit-First sells a bag of 5 apples for £2.05

Healthy-Harvest sells a bag of 10 apples for £4.15

Both stores sell the same size and type of apple.

(i) Complete this proportional line for **Fruit-First**



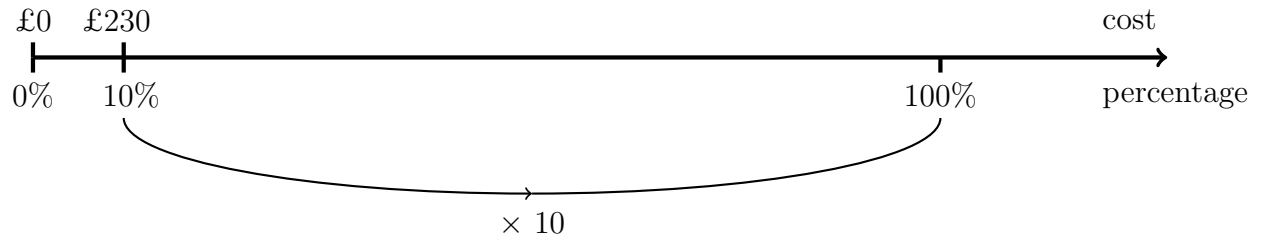
(ii) Complete: 10 apples are best value for money at

3. In a sale “early birds” can get 10% off the cost of a holiday.

{In this question “early birds”, means people who book early}

A holiday to France could be £230 cheaper if booked early enough.

Work out the usual price (100%) of the holiday to France.



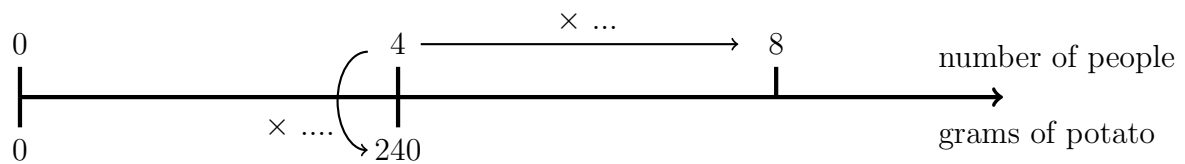
£

4. Here is the list of ingredients for making tortilla for 4 people.

Tortilla	
Ingredients for 4 people	
100 g	onion
240 g	potato
40 ml	olive oil
6	medium eggs

Ailen is going to make tortilla for 8 people.

(i) Complete the \downarrow **OR** the \rightarrow scale factor.



(ii) Work out how many grams of potato she should use.

..... grams

Answers

1. (i) $\rightarrow \times 6$ (ii) 42
2. (i) £4.10 (ii) Fruit-First
3. £2300
4. (i) $\downarrow \times 60$ **OR** $\rightarrow \times 2$ (ii) 480