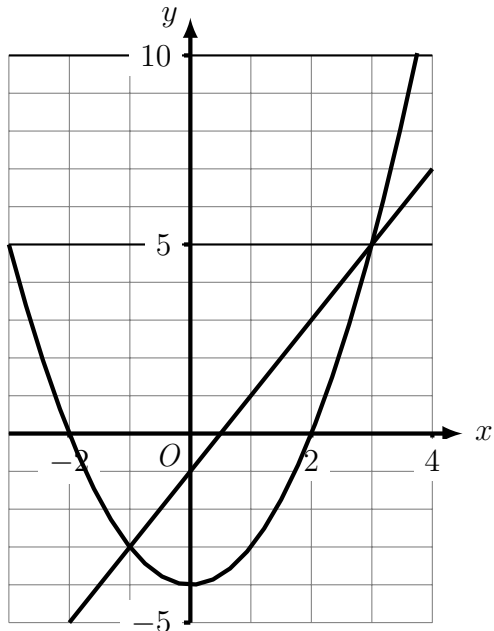
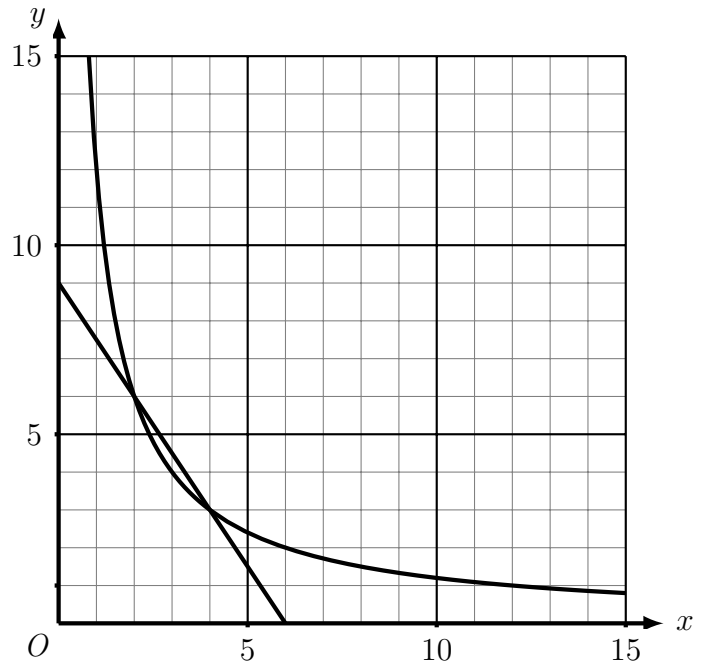


1. Use the graphs to solve the simultaneous equations

(a) $y = 2x - 1$ and $y = x^2 - 4$



(b) $y = 9 - 1.5x$ and $y = \frac{12}{x}$

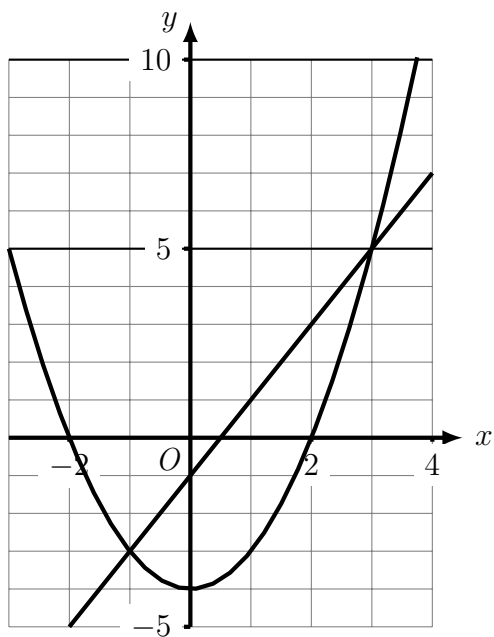


solveSimultaneous (5) Q1: (a) $x = -1$ and $x = 3$ (b) $x = 2$ and $x = 4$

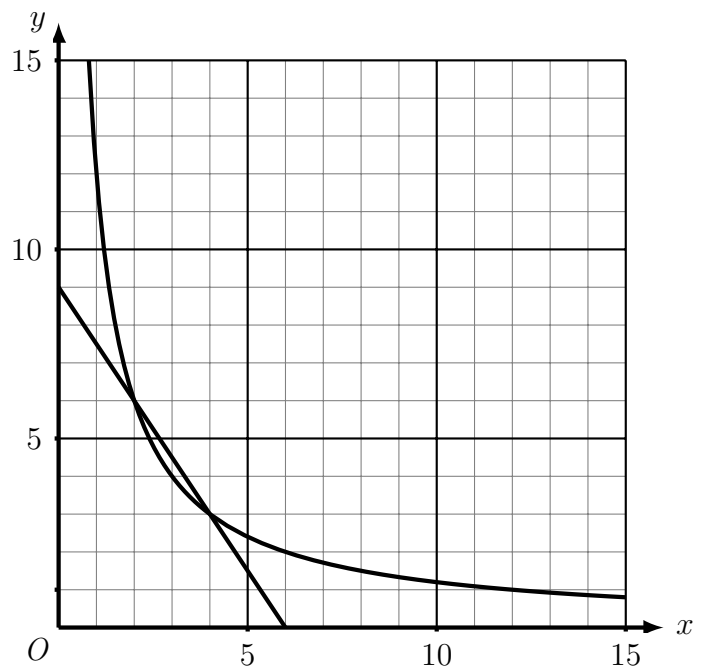
Q2: (a) $x = -2$, $x = 1$ and $x = 2$ (b) $x = -1$ and $x = 5$

1. Use the graphs to solve the simultaneous equations

(a) $y = 2x - 1$ and $y = x^2 - 4$



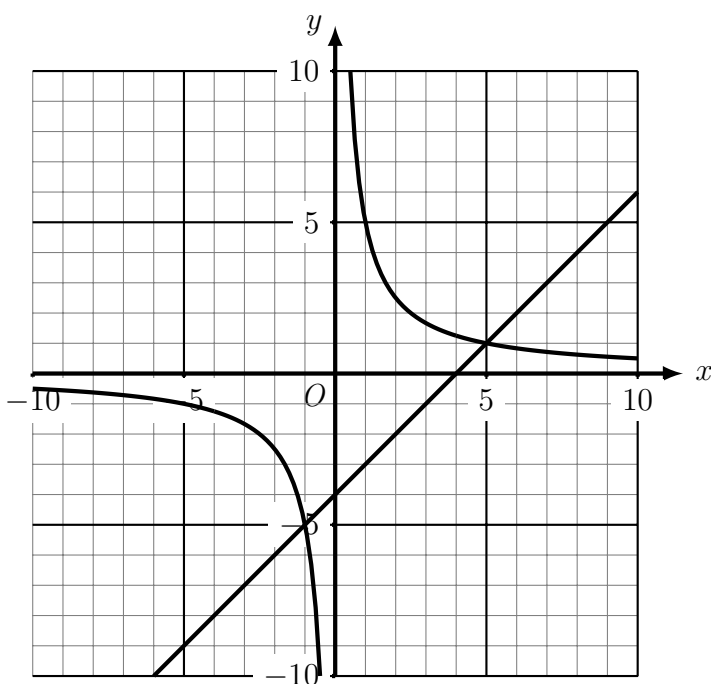
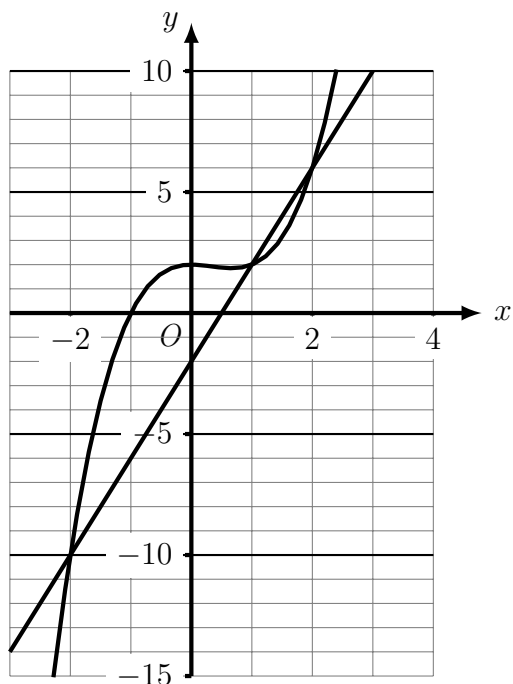
(b) $y = 9 - 1.5x$ and $y = \frac{12}{x}$



2. Use the graphs to solve the simultaneous equations

(a) $y = 4x - 2$ and $y = x^3 - x^2 + 2$

(b) $y = x - 4$ and $y = \frac{5}{x}$



2. Use the graphs to solve the simultaneous equations

(a) $y = 4x - 2$ and $y = x^3 - x^2 + 2$

(b) $y = x - 4$ and $y = \frac{5}{x}$

